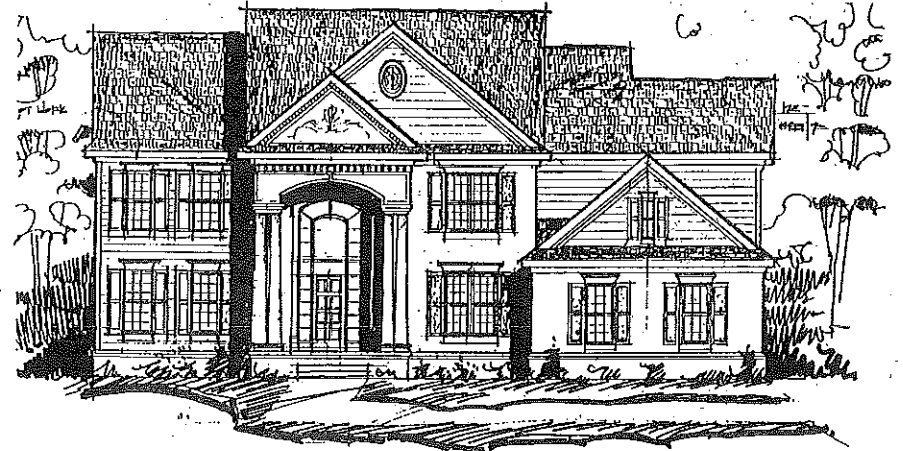
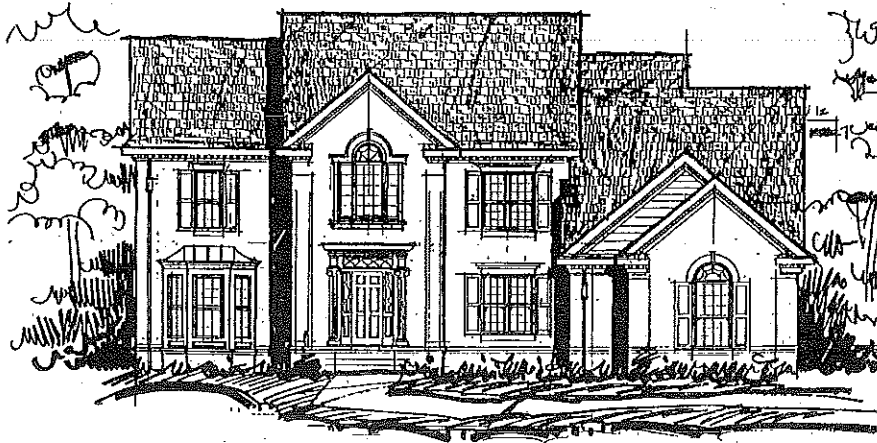


THE FAIRFAX



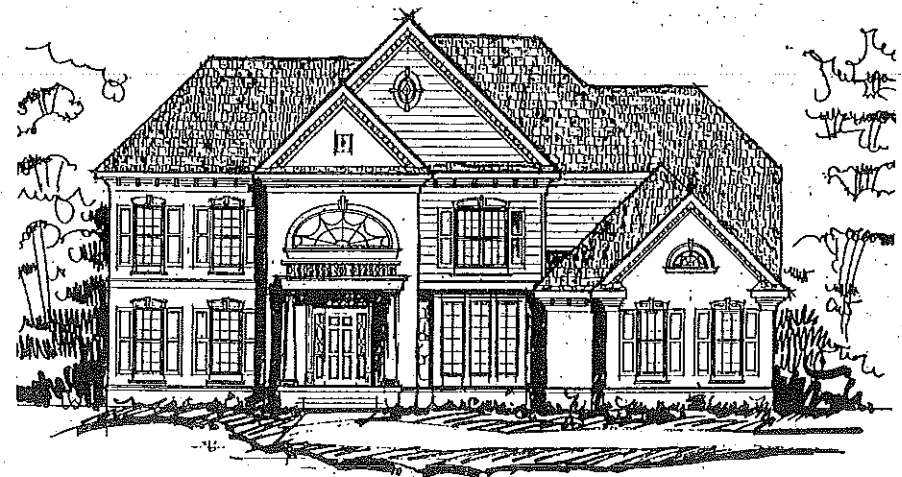
Elevation A

A two-story columned entry with arched glass is the focal point of this elegant Neoclassical elevation. Traditional overtones prevail in lap siding, shutters and gables.



Elevation B

This stately Georgian elevation features a dignified entry with columned pediment and leaded glass and extensive use of brick. Interesting window variations include both Palladian and bay windows.



Elevation C

A grand entry distinguishes this Georgian elevation with leaded glass, classic columns and a pediment topped by a dramatic tru-divided glass window. An interesting roofline features both hip and gabled variations with intricate molding.

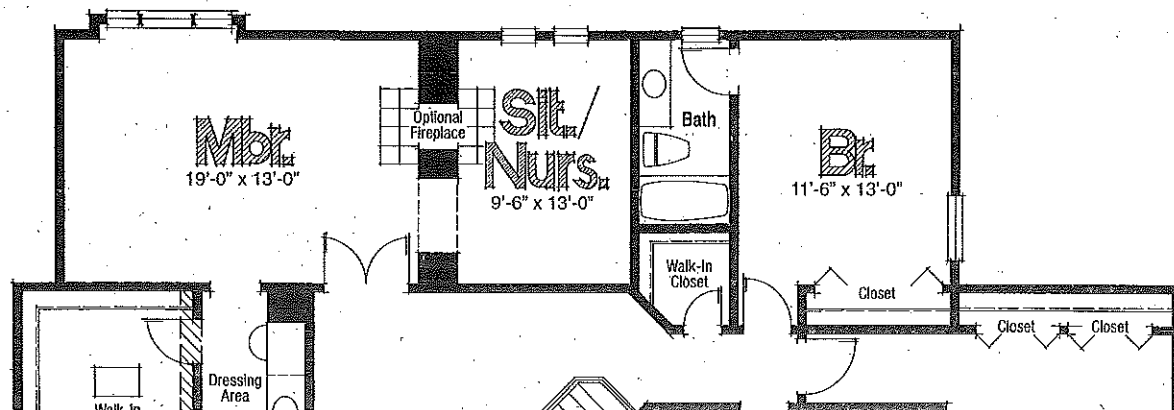
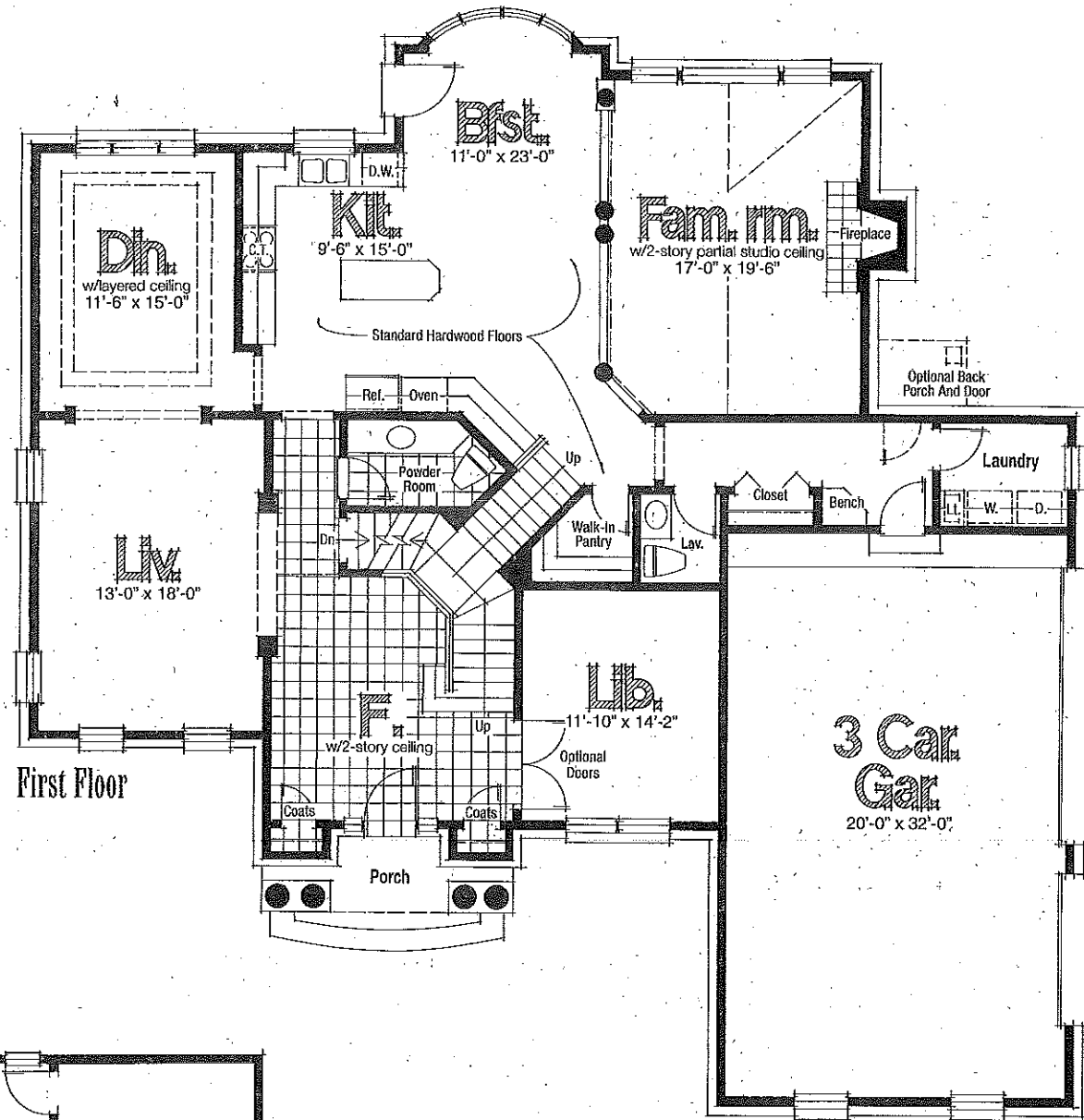
THE FAIRFAX

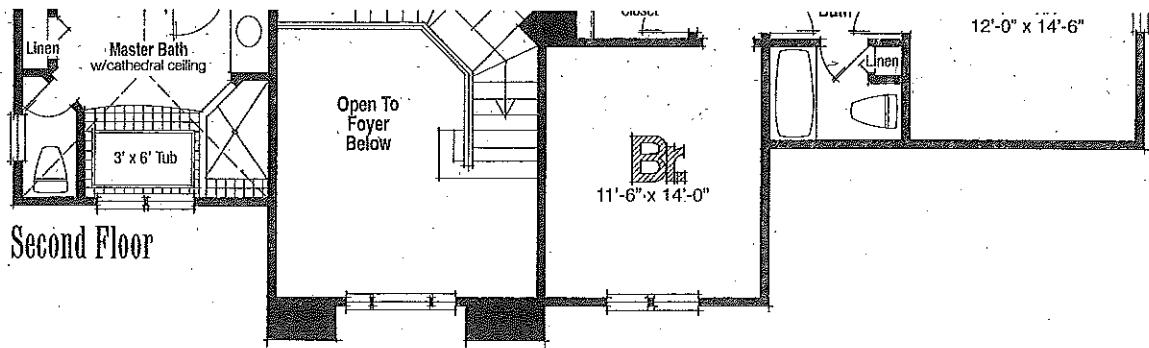
Bedrooms: 4

Baths: 3 Full, 2 Half

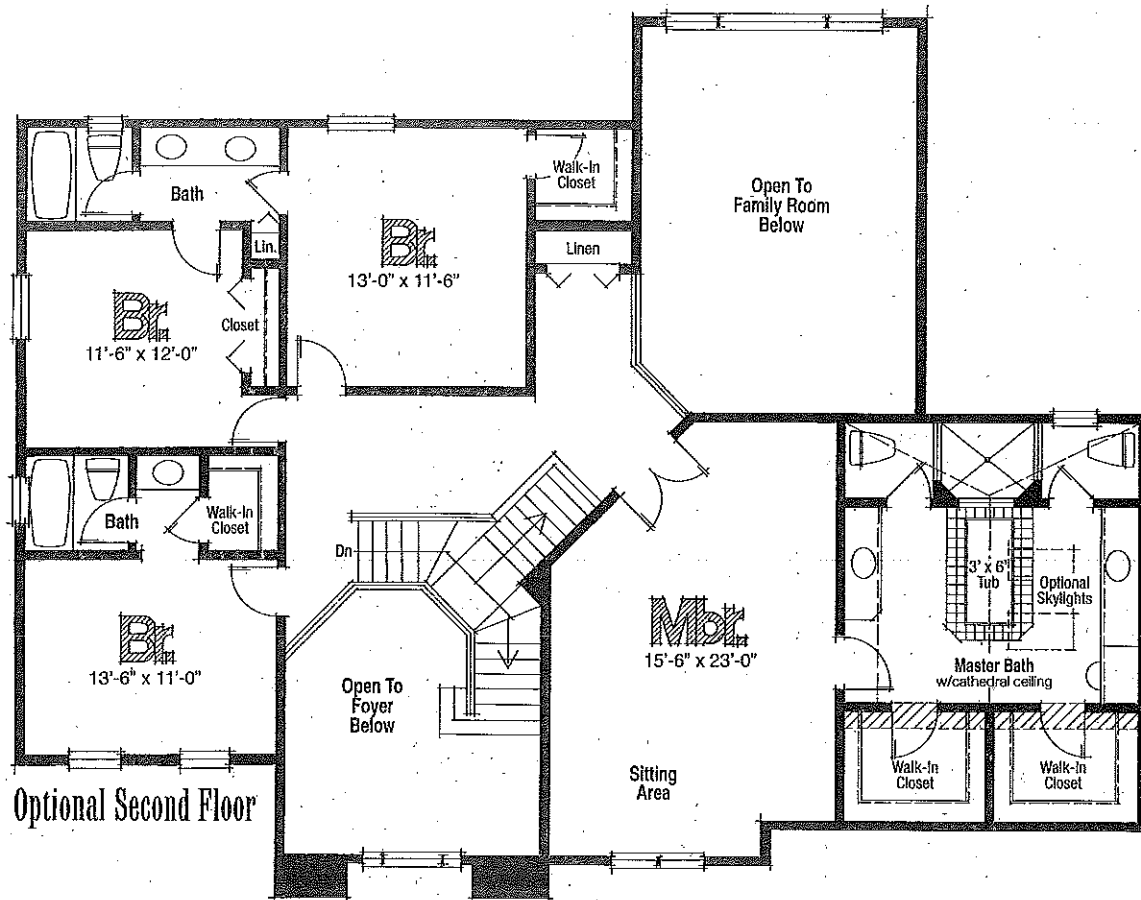
Square Footage: 3,669 – 3,738

A sophisticated two-story foyer with a unique Y-shaped staircase is a dramatic prelude to this elegant home. Comfortable style is found in formal and informal rooms. Family living is warmly welcomed with an expansive kitchen, arched nook and family room which flow together, separated only by classic columns.





A choice of second floor plans offers impressive master suites that celebrate luxury. One plan is highlighted by a very large bedroom that includes a sitting area and a lavish symmetrical bath with a peninsula whirlpool tub, dual entry shower, separate water closets and an elevated plant shelf. The other plan provides a separate sitting room or nursery area in the expansive master suite with its optional two-way fireplace.



The renderings are the artist's conception. Floor plans are intended to serve as a general guide, not to accurately depict the legal description of the property's walls, boundaries, dimensions, scale of rooms or their relative locations. We cannot provide any warranties or representations that the actual and depicted description will not differ. Features subject to change without notice.

